

**[Test] St Mark's Newsletter | Thurs 12th Aug**

1 message

**St Mark's Church Gillingham** <digitallead@stmarksgillingham.org>  
Reply-To: us2-921a18b9d6-a3b9687442@inbound.mailchimp.com  
To: digitallead@stmarksgillingham.org

12 August 2021 at 09:01



## COMING TO CHURCH

*Dear St Mark's family,*

*I wanted to share what we'll be doing at church over the next six weeks and offer something of a way forward at this time. Acknowledging the reality of both joy and pain- from birth to death and in between. From the challenges of birth during Covid to not being able to collectively mourn and give thanks for the death of loved ones, there are so many stories in between that speaks of fear and pain. The Online church has been a blessing, many people around the world have appreciated our efforts for online church - for some are just waiting to get back to some sense of 'normal' because technology has its limits. Gratitude to God for answering our prayers, for the fabulous NHS & Vaccination rollout. As we welcome the freedom we are privileged to we must not forget the people and places around the world that don't have what we have. As we continue to live for Jesus love this town and learn together, may loving and caring for others be the driving force.*

*Here's what's going to happen at St. Mark's, the specific things that the reopening strategy team recommended and PCC agreed on last Monday and which we will review all this in early September:*

### **BOOKING**

We will continue to ask you to book for services. **To book see the website or call the office 01634 570489.** Please book by 12 noon on Saturday before the Sunday service. The number of people allowed in a service will increase as we will set the seating one metre apart. This will also allow us to keep details for test and trace and also enable us to know the seating requirements (ie singles, couples family groups).

We would remind people not to attend services if you are unwell.

### **HAND SANITISING**

You will be asked to sanitise your hands as you enter and leave the building.

### **FACE COVERINGS**

We encourage and recommend that people continue to wear face masks in church, to protect themselves and others as we want to foster responsibility and care towards those who may be vulnerable in our church family.

### **SINGING**

You can sing keeping on your mask to minimise transmission of airborne particles.

### **THE PEACE**

We ask that people stand to greet one another without moving from their seats.

**MOVING AROUND** We will keep the direction of travel around church to a one-way system to help people to remember to be aware of others in church so that we can move around in an orderly way.

### **FOOD & DRINK**

Tea and coffee will be served outside (weather permitting) in disposable cups. This will not be able to take place until we can put together teams to serve.

### **FELLOWSHIP**

People are encouraged to connect and fellowship outside of church after the service finishes.

### **CAR PARK**

The church car park will not be open for parking in for Sunday morning services as this area is used as a main exit and safely set up for after church fellowship.

*As always I am available for a chat, to pray with you, to listen and to accompany you in your journey of discipleship. Please ask.*

*We take hold of the words of prophet Isaiah: Fear not, for I am with you; be not dismayed, for I am your God; I will strengthen you, I will help you, I will uphold you with my righteous right hand.*

*- Saju Muthalaly*

[Click here to book your place](#)

**THIS SUNDAY | 15TH AUG**




**MORNING SERVICE | 10.30am**  
In Church & Online

**FRIENDSHIP | Elijah and the Widow - Unlikely Allies**  
Speaker: David Wilkins  
[1 Kings 17]

## CHILDREN & YOUTH GROUPS

**GEMS & PEBBLES** will be pausing over summer and returning in September.

**SUMMIT | 6pm | In Person**



**FAMILY RECONNECT**  
15th Aug | 2.30pm | Church

An informal family service with bible story, songs, games, craft activity and space for parents to have fellowship. A chance for children to feel comfortable in the church building and families to connect with each other. Drinks will be available.

**REVIVE**

A relaxed & intimate gathering for Christians & non-Christians alike, where no question about life or faith is off-limits!

Sun 15th Aug at 4pm. Tea/coffee served.



**REVIVE**  
15th Aug | 4 - 5.30pm  
Outside Church

Revive is back!  
A relaxed and interactive gathering for Christians and non-Christians alike, where no question about life or faith is off-limits. It will not be live streamed.

Tea/coffee will be available.

---

## COMING WEEK

---



## Standing in the Gap (Prayer meeting) Saturdays | 7-8am | Online

On Zoom, join us:  
[Meeting ID: 223 851 1807 | Passcode: inthegap]



## Little Eden

A garden project...  
that gives.

## Little Eden Project Sundays | 2pm | St Augustine's Wednesdays | 11am | St Mark's

Come and get stuck in with the garden project that gives. Run by Karen Turnbull.



## Open Church Tuesdays | 10am-12pm | Church

Open Church is back! Come along for a chat, fellowship or private prayer. Refreshments will be served outside. Please be aware masks must be worn inside.

If you are interested in volunteering please contact Dammy via [admin@stmarksgillingham.org](mailto:admin@stmarksgillingham.org).



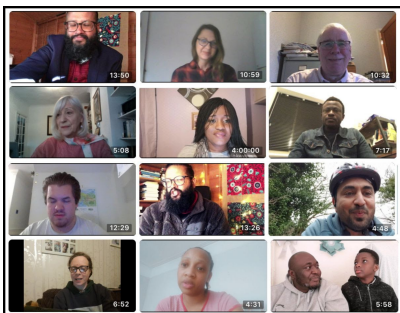
## CRAFT CLUB Tuesdays | 10am-12pm | Open Church

Bring your own craft or join in with craft of the week. For more information email [karenturnbull@stmarksgillingham.org](mailto:karenturnbull@stmarksgillingham.org).



## Thanksgiving Service for Zach Freeth Wednesday | 12pm | Facebook

While, due to restrictions, the church service is invitation only, Claire would like to invite members of the St Mark's congregation to join in watching the service online on the St Mark's Facebook page: [www.facebook.com/stmarksgillingham](https://www.facebook.com/stmarksgillingham)



## Daily Reflections & Prayers Mondays - Saturdays | 9am & 8pm | Facebook

As of May the new schedule will be:  
**Morning Reflections** | 9am | Mon, Wed, Fri  
**Evening Prayers** | 8pm | Tues, Thurs, Sat

# NEWS & IMPORTANT INFORMATION

- Joining a **home group** is a brilliant chance to meet and pray with others, build relationships, support one another, exchange views and explore God's word together. To sign up either see the website or contact the office **01634 570489**



- Medway Foodbank are running a fundraiser to help fund their new larger warehouse unit. They are needing the larger space to enable them to keep up with the ongoing increased demand for Foodbank support in Medway.



You can donate online:

<https://www.goldengiving.com/fundraising/Warehouse>

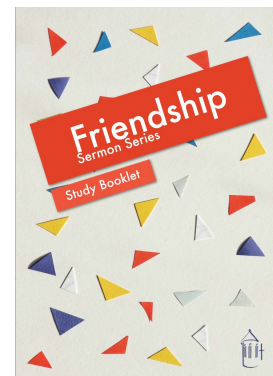
Or donations by cheque can be made out to 'Warehouse Fundraiser' and send to **Medway Foodbank, Unit 26, Riverside 1, Sir Thomas Longley Road, Medway City Estate, Rochester, ME2 4DP**

Many thanks as always for the ongoing support from so many across Medway with food and financial donations. It is all much appreciated as we seek to serve those in need in our community.

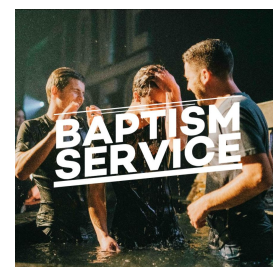
- Mind (North Kent) are running some drop-in **wellbeing sessions for children and young people**. Every Wednesday in August at St Augustine's Gillingham.



- We have produced a **booklet** to accompany the new **Friendship sermon series**, which contains bible readings and questions. You can use the material in your small groups, trios or on your own. Contact the office for a printed copy of the booklet: **01634 570489**



- On **Sun 19th Sept at 6.30pm** there is going to be a **Baptism Service**, conducted in a covid-safe way. **Baptism** marks the beginning of a journey with God which continues for the rest of our lives, the first step in response to God's love. For all involved it is a joyful moment when we rejoice in what God has done for us in Christ, making serious promises and declaring the faith. There will be a baptism preparation session on Sun 12th Sept 4 - 6pm. If you are interested in being baptised or



in the renewal of baptism please **contact Vicki**,  
[vicarspa@stmarksgillingham.org](mailto:vicarspa@stmarksgillingham.org).

- Access to the Old Vicarage is only when absolutely necessary. Please contact the office, **01634 570489**, [vicarspa@stmarksgillingham.org](mailto:vicarspa@stmarksgillingham.org), if you need to make an appointment and do not drop by without prior arrangement. Vicki will be working in the Old Vicarage 3 days a week - Mon, Wed, Fri. On Tues and Thurs the answerphone and email will be checked for emergencies only. Messages and e-mails will be dealt with during office hours.



---

## PLEASE PRAY FOR

### OUR WORLD:

- Pray through the news we hear & see and for the needs highlighted through the various links with charities and mission organisations.
- **The impoverished**, the sick and those caught in violent situations, that help may come in unexpected ways to minister into their plight. Please pray for those parts of the world and situations on your heart.

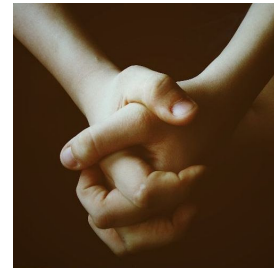
### UK:

- **The family of Logan Williamson**, the 5-year-old who has been found in the Ogmere River, Bridgend. Pray for God's many comforts in this tragedy and loss.
- For **GB athletes** who have contributed so much to a successful Olympic Games; for their families, trainers & supporters; for continuing good sportsmanship throughout; and for all Olympic athletes.
- **Students** on summer break that they can unwind and take time out; for those preparing to go to Colleges, Universities and Training Establishments in September; those who will continue their ongoing studies; and for our teachers, tutors and trainers that they may know rest and relaxation.

### GILLINGHAM & MEDWAY:

- For **the family of Rory Baldwin** from Farnham in Surrey, who went missing after a night out with friends and was last seen near the Vines, Rochester. Kent Online states his body has been found in St Margaret's Street, Rochester.
- For **holiday clubs** and organised activities for our children & young people, that they are well run; for fun, laughter & fulfilment, and that they can grow and thrive. Also, for families in the holidays, particularly where life is difficult or challenging - may the Lord usher in His loving care & provision.
- For God's covering over our communities and town centres - in the air space above, to the gutters below; for the open spaces, parks and riversides; for the busy and bustling areas and the hidden places.

*If you would like to be added to the **Prayer & Praise** email list to receive weekly praise reports and prayer requests from our church family please contact Kath Bertrand: [kathyb.nana@yahoo.co.uk](mailto:kathyb.nana@yahoo.co.uk)*



## UPCOMING EVENTS



**NEXT SUNDAY**  
22nd Aug | 10.30am  
In Church & Online

**FRIENDSHIP | Paul and Timothy - Encouragement**  
Speaker: Becky Cooper  
[2 Timothy 1:3-7]



**SUMMER GARDEN PARTY**  
Sun 22nd Aug | 4-6pm | Old Vicarage Garden

This is our third and final Summer Garden Party. This is to give us all a chance to socialise & reconnect over tea & cake. If you haven't attended one of the previous parties then please do join us.

For more info & to RSVP go to:  
[www.stmarksgillingham.org/party](http://www.stmarksgillingham.org/party)  
Or call the office: 01634 570489



**GOSPEL NIGHT**  
Sun 29th Aug | 6.30pm | Church

A night of unhindered praise and worship led by a gospel band with guest artiste Mins. Segun Praise.

**HAVE A WONDERFUL WEEK**



*[Cricket & BBQ / 8th Aug]*

Taken a nice photo of Gillingham? Send it to [digitallead@stmarksgillingham.org](mailto:digitallead@stmarksgillingham.org) to be featured in the newsletter.

**St Mark's Church**  
Canterbury Street, Gillingham, ME7 5TP  
Registered Charity 1141709

**Office:** The Old Vic, Vicarage Road, Gillingham, ME7 5JA  
01634 570 489 | [admin@stmarksgillingham.org](mailto:admin@stmarksgillingham.org)  
**Office hours:** By appointment only.

---

*Copyright © 2021 St Mark's Church Gillingham, All rights reserved.*  
You are receiving this email because you opted in via our website.

Want to change how you receive these emails?  
You can update your preferences or unsubscribe from this list.

